



GOOD MORNING  
Have Good Trading Day

TUESDAY



Price is what you pay.  
Value is what you get.

- Warren Buffet



## MARKET PULSE

### INDIAN INDICES

NAME	CMP	NET CH.	%
SENSEX	25150	+105	+0.42
NIFTY	7650	+39	+0.52

### INDIAN ADR'S

SYMBOL	CLOSE	GAIN/ LOSS %
DRREDDY	44.28	+0.96
HDFCBANK	57.34	+1.99
ICICIBK	7.22	-1.10
INFY	16.32	Unch
TATAMOTOR	26.97	Unch
WIPRO	11.88	+0.76

### FII AND MF ACTIVITY

SYMBOL	In Crs.
FIIs Eq (Provisional)	-157.07
FIIs Index Future	164.73
FIIs Index Options	1260.46
FIIs Stock Future	124.15
FIIs Stock Options	-31.85
DII's Eq (Provisional)	386.47

### CURRENCY

RBI RATE	14-DEC-2015
RUPEE - \$	66.9940
EURO	73.4656
YEN 100	55.2900
GBP	101.7840

## MARKET PULSE

### GLOBAL INDICES

NAME	CMP	NET CH.	%
DOW	17368	+103.	+0.60
NASDAQ	4952	+18	+0.38
NIKKEI	18744	-138	-0.74
HANG SENG	21349	+39	+0.18
SGX NIFTY	7671	-25	-0.32

### WORLD COMMODITIES

FUTURE	U\$\$	CHANGES
CRUDE	36.36	+0.05
NATURAL GAS	1.901	+0.007
GOLD	1064.0	+0.60
SILVER	13.700	+0.005
COPPER	2.1070	+0.0045

### WORLD EVENTS

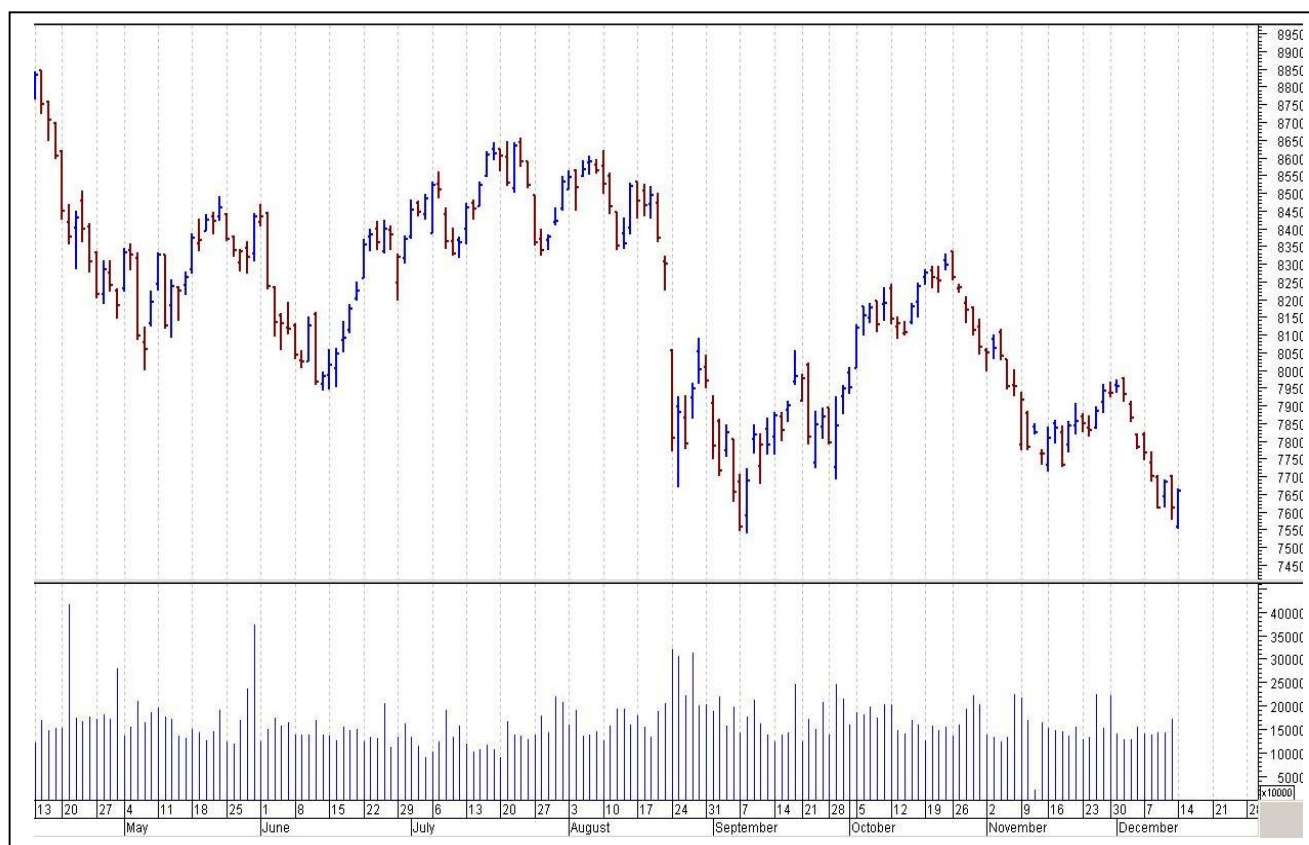
- US:CPI m/m
- Core CPI m/m
- UK:CPI y/y

## TOP STORY

- The November Consumer Price Index (CPI) has come in higher at 5.41 percent versus 5 percent month-on-month driven mainly by rise in food inflation. The food inflation came in 6.07 percent versus 5.25 percent (M-o-M).
- M&M Says Co & Tech Mahindra To Acquire Italian Car Design Company Pininfarina -To form an SPV where M&M will hold 40% and Tech M will hold 60%
- Sun Pharma -Co Announces Divestment Of US Manufacturing Unit -Says Is In Agreement With Nostrum For Divestment Of The Bryan (Ohio) Unit
- Petron Engg Gets Order Worth `22.5 Cr From Ramco Cements
- NBCC Gets Order To Carry Out Work Under Clean Ganga Mission In Bihar
- Hotel Leela Completes Sale Of The Leela, Goa On Slump Sale Basis For `725 Cr
- Natco Pharma receives approval for generic Daclatasvir Dihydrochloride tablets in India



## NIFTY CHART



## MARKET COMMENTARY

Indian equity benchmarks ended the volatile day of trade with a gain of around half a percent on Monday with frontline gauges recapturing their crucial 25,100 (Sensex) and 7,650 (Nifty) levels. After a gap-down opening, markets showed great amount of resilience to enter into green terrain, as investors took encouragement from report that Industrial output grew by 9.8 per cent in October on the support of robust demand for manufactured products in the festival month compared to just 3.6 per cent in September. For today's trade nifty likely to trade in the range between 7675 - 7695 in the upper side and 7635 - 7615 in the lower side.

### MARKET LEVELS

	CMP	SUPPORT LEVELS				RESISTANCE LEVELS			
NIFTY	7650	7635	7615	7575	7545	7675	7695	7725	7745
USDINR	67.23	67.16	67.11	67.05	66.9	67.3	67.45	67.5	67.6





### FUTURES CORNER

SCRIPS	CLOSE	SUPPORT	TARGET		REMARKS
		STOP LOSS	T1	T2	
IRB	235.75	233	238	241.8	TRADING CALL
HDFC	1190.25	1182	1198	1208	TRADING CALL
ENGINEERSIN	216.35	214	219	221.8	TRADING CALL

### EQUITY CORNER

SCRIPS	CLOSE	SUPPORT	TARGET		REMARKS
		STOP LOSS	T1	T2	
BPL	36.95	35.5	38	40.8	TRADING CALL
MANAPPURAM	28.35	27.2	29.8	30.8	TRADING CALL

### DELIVERY BASED CALL / INVESTMENT CALL

SCRIPS	CMP	SUPPORT	TARGET		REMARK
		STOP LOSS	T1	T2	

### BULK DEALS (BSE)

SCRIP	CLIENT NAME	BUY/SELL	QUANTITY	PRICE
NIL				

### BULK DEALS (NSE)

SCRIP	CLIENT NAME	BUY/SELL	QUANTITY	PRICE
GPIL	VISA CAPITAL PARTNERS	BUY	349185	64
TIL	CREST CAPITAL & INVESTMENT	BUY	55000	454
TIL	THE NOMURA TRST & BNKG CO LTD AS THE TRUSTEE OF NOMURA IND	SELL	114897	454

### SCRIP'S IN F&O BAN

(To resume for normal trading below 80% of market wide limit required)

IBREALEST, UNITECH



NIFTY 50 STOCKS: SUPPORT & RESISTANCE						
Symbol	Close	Support 1	Support 2	Pivot Point	Resistance1	Resistance2
ACC	1341.80	1320.87	1299.93	1332.93	1353.87	1365.93
ADANI PORTS	254.55	243.97	233.38	249.73	260.32	266.08
AMBUJACEM	193.25	190.03	186.82	192.27	195.48	197.72
ASIANPAINT	875.45	859.50	843.55	868.95	884.90	894.35
AXISBANK	431.35	426.75	422.15	434.10	438.70	446.05
BAJAJ-AUTO	2409.20	2380.20	2351.20	2404.10	2433.10	2457.00
BANKBARODA	156.80	153.83	150.87	156.27	159.23	161.67
BHARTIARTL	306.15	303.20	300.25	307.10	310.05	313.95
BHEL	167.15	164.80	162.45	166.90	169.25	171.35
BOSCH LTD	18211.95	17994.63	17777.32	18222.32	18439.63	18667.32
BPCL	890.05	881.60	873.15	891.80	900.25	910.45
CAIRN	124.95	122.78	120.62	124.17	126.33	127.72
CIPLA	637.05	630.80	624.55	637.30	643.55	650.05
COALINDIA	316.15	308.22	300.28	312.93	320.87	325.58
DRREDDY	3010.40	2968.77	2927.13	2992.88	3034.52	3058.63
GAIL	340.35	335.57	330.78	339.73	344.52	348.68
GRASIM	3651.50	3585.38	3519.27	3652.32	3718.43	3785.37
HCLTECH	840.85	827.02	813.18	839.83	853.67	866.48
HDFC	1188.05	1164.40	1140.75	1179.70	1203.35	1218.65
HDFCBANK	1055.05	1043.48	1031.92	1051.67	1063.23	1071.42
HEROMOTOCO	2535.75	2505.80	2475.85	2530.40	2560.35	2584.95
HINDALCO	78.80	76.62	74.43	77.93	80.12	81.43
HINDUNILVR	839.00	820.80	802.60	831.65	849.85	860.70
ICICIBANK	249.00	245.35	241.70	248.65	252.30	255.60
IDEA	134.90	131.60	128.30	133.50	136.80	138.70
INDUSINDBK	914.35	904.73	895.12	913.37	922.98	931.62
INFY	1069.50	1053.98	1038.47	1063.57	1079.08	1088.67
ITC	320.10	317.37	314.63	319.88	322.62	325.13
KOTAKBANK	674.10	665.57	657.03	671.53	680.07	686.03
LT	1274.40	1261.82	1249.23	1277.08	1289.67	1304.93
LUPIN	1747.85	1727.42	1706.98	1742.93	1763.37	1778.88
M&M	1284.80	1243.43	1202.07	1269.87	1311.23	1337.67
MARUTI	4576.80	4502.20	4427.60	4546.10	4620.70	4664.60
NTPC	132.85	131.70	130.55	132.55	133.70	134.55
ONGC	213.40	211.57	209.73	213.08	214.92	216.43
PNB	124.70	121.87	119.03	123.48	126.32	127.93
POWERGRID	128.15	126.80	125.45	128.10	129.45	130.75
RELIANCE	955.10	946.23	937.37	954.87	963.73	972.37
SBIN	225.95	224.07	222.18	225.88	227.77	229.58
SUNPHARMA	768.60	757.17	745.73	765.08	776.52	784.43
TATAMOTORS	371.60	363.57	355.53	368.53	376.57	381.53
TATAPOWER	61.60	60.95	60.30	61.75	62.40	63.20
TATASTEEL	245.00	239.33	233.67	244.12	249.78	254.57
TCS	2378.45	2343.70	2308.95	2365.35	2400.10	2421.75
TECHM	543.65	532.10	520.55	538.55	550.10	556.55
ULTRACEMCO	2830.60	2789.07	2747.53	2816.53	2858.07	2885.53
VEDL	84.30	82.52	80.73	83.88	85.67	87.03
WIPRO	567.05	561.37	555.68	565.68	571.37	575.68
YESBANK	683.25	671.17	659.08	680.08	692.17	701.08
ZEEL	405.75	397.57	389.38	403.28	411.47	417.18



## CORPORATE ACTION / BOARD MEETINGS

NSE Download Ref.No.: NSE/CML/31302:- Suspension of trading in Equity Shares of the Companies WEF December 22, 2015 for Non-Compliance of certain clauses of the Listing Agreement: BRANDHOUSE, KRISHNAENG

NSE Download Ref.No.:NSE/CML/31309:- Face Value Split - SMS Pharmaceuticals Limited from Rs.10 to Rs.1 wef December 17, 2015

NSE Download Ref.No.:NSE/CML/31318:- ESSARPORTS will be suspended from trading w.e.f December 24, 2015 due to Voluntary delisting of equity shares of the company

NSE Download Ref. No.:NSE/SURV/31317:- Pilani Investment and Industries Corporation Limited - SYMBOL - (PILANIINVS) shall be transferred from trade for trade segment (series: BE) to rolling segment (series: EQ) with effect from December 23, 2015 (Wednesday).

### BOARD MEETINGS

COMPANY NAME	DATE	PURPOSE	RS. PER SH.
JPASSOCIAT	15-Dec-15	Annual General Meeting	
TFCILTD	16-Dec-15	Dividend	1
CANDC	16-Dec-15	Annual General Meeting	
SADBHIN	17-Dec-15	Annual General Meeting	
UBENGG	17-Dec-15	Annual General Meeting	
ORBITCORP	17-Dec-15	Annual General Meeting	
SMSPHARMA	17-Dec-15	Face Value Split From Rs 10 To Re 1	
ECLERX	17-Dec-15	Bonus 1:3	
VISASTEEL	17-Dec-15	Annual General Meeting	
GUJGASLTD	17-Dec-15	Dividend	5
HCLTECH	17-Dec-15	Annual General Meeting	
NOVAELEMAG	18-Dec-15	Annual General Meeting	
MANINDS	18-Dec-15	Annual General Meeting/ Dividend	1.5
ANDHRACEMT	18-Dec-15	Annual General Meeting	
NOVASTEEL	18-Dec-15	Annual General Meeting	
NET4	21-Dec-15	Annual General Meeting	
INDTERRAIN	21-Dec-15	Face Value Split From Rs 10 To Rs 2	
ENTEGRA	21-Dec-15	Annual General Meeting	
HITECHPLAS	21-Dec-15	Annual General Meeting/ Dividend	0.9
VENKEYS	21-Dec-15	Bonus 1:2	
ALICON	22-Dec-15	Annual General Meeting/ Dividend	3
DHANUKA	22-Dec-15	Annual General Meeting/ Dividend	4.5

## NEWS & RUMOURS:

- Gold (Spot Dollar) major support = \$1051/\$1017 & Resistance = \$1101/\$1132.
- Crude oil range->\$32 to \$42.
- Energy, Credit Markets Weaken, Dragging Stocks Lower before Fed: - U.S. stocks fluctuated at a 10-week low as crude held at its cheapest since 2009 and credit markets weakened further in the run-up to the Federal Reserve's decision this week on interest rates.
- Yuan Declines to Four-Year Low as New Index Signals Weakness: - China's yuan fell to a four-year low after the central bank said the currency shouldn't be measured by its moves against the dollar alone, a statement that is being interpreted as a sign it will allow further declines.
- Crude Falls Below \$35 per Barrel in New York for First Time Since 2009: - Oil fell below \$35 a barrel in New York for the first time since 2009 as Iran reiterated its pledge to boost crude exports, bolstering speculation OPEC members will exacerbate the global oversupply.
- Natural Gas Falls to Lowest Since 2002 on Mild Weather Outlook: - U.S. natural gas tumbled to the lowest intraday level since January 2002 amid forecasts that mild weather will persist through the end of the month. January futures fell as much as 5.6 percent to \$1.879 a million British thermal units on the New York Mercantile Exchange and traded at \$1.881 at 12:14 p.m. London time. Gas is down 35 percent this year, headed for its second annual decline.
- Gold for immediate delivery fell 0.3 percent to \$1,071.39 an ounce, extending last week's 1.1 percent loss. Industrial metals resumed declines.

## TRENDS & OUTLOOK – DATE: 15- Dec- 2015

### PRECIOUS METALS:

COMMDITY (MCX)	S2	S1	PIVOT POINT	R1	R2
GOLD (Feb)	25100	25270	25500	25790	26100
SILVER (Mar)	31300	32500	33600	34700	36000

### BASE METALS

COMMDITY (MCX)	S2	S1	PIVOT POINT	R1	R2
COPPER (Feb)	306	312	317	322	327
ZINC (Dec)	98.40	101.10	103.50	105.90	108.30
LEAD (Dec)	110.10	112.30	115.50	118.20	120.75
NICKEL (Dec)	554	570	584	609	627

### ENERGY

COMMDITY (MCX)	S2	S1	PIVOT POINT	R1	R2
CRUDE OIL (Dec)	2170	2266	2370	2525	2626
NATURAL GAS (Dec)	115	120	127	135	141

### DATE TALKS : TODAY'S ECONOMIC DATA :

Monetary Policy Meeting Minutes of AUD, German ZEW Economic Sentiment, CPI, Core CPI, Empire State Manufacturing Index, NAHB Housing Market Index.





Registered Office

Indira House, 3rd Floor, 5 Topiwala Lane,  
Opp. Lemington Road Police Station, Grant Road (East), Mumbai - 400007.

Corporate Office

'Ramavat House' E-15, Saket Nagar, Indore - 452018 (M.P.)

Customer Care

Tel: +91-731-4097170/ 71/ 72/ 73/ 74 M. +91 93031 72345

Email: [customercare@indiratrade.com](mailto:customercare@indiratrade.com) [www.indiratrade.com](http://www.indiratrade.com)



INSTITUTIONAL DEALING UNIT

Africa House, 5, Topiwalla Lane, Lamington Road, Mumbai, 400007

Tel: +91 22 30080678 Fax : +91 22 23870767 Email : [ie@indiratrade.com](mailto:ie@indiratrade.com)

**Disclaimer**

This report is for private circulation within the Indira Group. This report is strictly confidential and for information of the selected recipient only and may not be altered in any way, transmitted to, copied or distributed, in part or in whole, to any other person or to the media or reproduced in any form. This report should not be construed as an offer or solicitation to buy or sell any securities or any interest in securities. It does not constitute a personal recommendation or take into account the particular investment objectives, financial situations, or any such factor. The information, opinions estimates and forecasts contained here have been obtained from, or are based upon, sources we believe to be reliable, but no representation of warranty, express or implied, is made by us to their accuracy or completeness. Opinions expressed are our current opinions as of the date appearing on this material only and are subject to change without notice.